



## Sweet success in Paris



Thank you for attending the 55th Annual Meeting in Paris, making it another huge success. We had over 3800 delegates this year, and the programme was extremely well-received. We enjoyed an excellent mixture of plenary lectures, debates and symposia over an incredibly insightful 3 days.

We were delighted to host this year's meeting in the magnificent capital of France. We hope you enjoyed the city outside the meeting, and indulged in all it has to offer.

This year's theme was 'Horizons in paediatric endocrinology', which was truly visible throughout the programme, as our expert speakers explored the future direction of the field.

I would like to take this opportunity to thank once again the members of the Programme Organising Committee, chaired by Mehul Dattani, for their excellent work. Their endeavours generated a great deal of media attention, with research from the meeting being covered

internationally by both general interest newspapers and specialist medical websites. For further details, see [www.espe2016.org/general-information/scientific-information/media-coverage](http://www.espe2016.org/general-information/scientific-information/media-coverage).

We congratulate all our award winners, especially Wieland Kiess, who won ESPE's most prestigious award, the Andrea Prader prize. You will find details of this year's prize winners on [pages 3–4](#).

I must also thank the Local Organising Committee, chaired by Agnès Linglart, who contributed to the scientific programme and put together a great social programme, culminating in the ESPE evening at the beautiful City Hall in Paris. My thanks also go to the Palais de Congrès, and the conference team at Bioscientifica.

Last but certainly not least, I thank you all for providing such a large number of innovative and interesting scientific abstracts, for contributing hugely to the quality of the meeting and for coming to ESPE 2016 in Paris! I hope you enjoyed everything this year's meeting provided: please send us your comments at [espe@eurospe.org](mailto:espe@eurospe.org).

We look forward to seeing you at the 10th International Meeting of Pediatric Endocrinology in Washington, DC, USA, on 14–17 September 2017 ([www.internationalmeeting2017.org](http://www.internationalmeeting2017.org)).



My best wishes  
**Professor Jean-Claude Carel**  
ESPE President 2016

### ESPE Newsletter Contents [\(click on a link below\)](#)

- ⊗ ESPE Update
- ⊗ New Council members welcomed
- ⊗ Seminar on rare paediatric endocrine diseases
- ⊗ Welcome to the Newsletter team!
- ⊗ Award winners at ESPE 2016
- ⊗ ESPE: supporting endocrine science
- ⊗ ESPE Summer School 2016
- ⊗ Autophagy: Nobel-winning research with implications for endocrinology
- ⊗ Achieving more together - Gary Butler
- ⊗ Symposium in memory of Primus-Eugen Mullis
- ⊗ Future meetings and deadlines

## Welcome to issue 34

DEAR FRIENDS AND COLLEAGUES,  
It was wonderful to see so many of you at the 55th Annual Meeting of ESPE in Paris in September. Once again, the event treated us to the latest research and exciting developments in our discipline. We thank Jean-Claude Carel and everyone else involved in the meeting's organisation for providing such a successful event.

On [pages 3–4](#), you can join us in congratulating the many prize winners who received awards at the ESPE Meeting. Their endeavours, and the important contributions of all our speakers, poster presenters and delegates, ensure that paediatric endocrinology thrives and continues to improve the support we can offer our patients. Thank you all.

At the ESPE Meeting, we welcomed new members to the ESPE Council ([see page 2](#)). We also bade a fond farewell to long-standing Council members Gary Butler (formerly Chair of the Clinical Practice Committee) and Jan Lebl (formerly Chair of the Education &

**Welcome** *continued from page 1*

Training Committee). Following Jan's article in the last issue, this time it is Gary's turn to look back on his productive term as a Committee Chair (page 7).

The ESPE Meeting was preceded as always by an excellent ESPE Summer School. You can read more about this year's event from Summer School Co-ordinator Nick Shaw on page 6.

This issue sees the first in a series of exciting regular updates from your Science Committee (page 5). We are sure you will agree that the ESPE Science Committee provides fantastic opportunities for members to strengthen their scientific and research careers in paediatric

endocrinology. This regular column will ensure that you are always up to date with the activities that are available to you.

As always, the rest of the issue is full of news and information from the world of paediatric endocrinology. Do make sure you send us your own news to include in future issues.

Yours sincerely,

**Dr Assimina Galli-Tsinopoulou** (Thessaloniki, Greece)

**Dr Abel López-Bermejo** (Girona, Spain)

**Dr María Salomón Estébanez** (Manchester, UK)

Editorial Board [espe@eurospe.org](mailto:espe@eurospe.org)

WOW – WHAT A FANTASTIC MEETING we had in Paris! It was wonderful to see so many of you at the ESPE Connect stand. It's always great to get the opportunity to interact with our members and show you what ESPE has to offer.

Throughout the meeting, we held website focus groups. Thank you to those of you who gave your thoughts and feedback. The groups provide a very important contribution to the research that is informing the website redevelopment project. This will enable us to deliver a fantastic new site, full of the information you want. The new ESPE website will be launched in 2017 – so watch this space for more updates on this exciting project.

At the ESPE Activities Update, our Education & Training Committee and Science Committee gave insights into the diverse range of activities that ESPE has on offer. With seven schools, our ESPE e-Learning



platform, the PETCA (Paediatric Endocrine Training Centres for Africa) programme, the new Science Workshop and brilliant research grant opportunities, there is something to suit every member at all stages of their career.

Earlier this year, we held our first e-vote to elect the new Council Committee Chairs, which was very successful. The new Chairs were announced during the Annual Business Meeting (ABM) in Paris. We congratulate Mehul Dattani, who will continue with a further 3-year term as Chair of the Programme Organising Committee. We welcome Rasa Verkauskiene on her

election as Chair of the Education & Training Committee, and Evangelia Charmandari, who was elected as Chair of the Clinical Practice Committee.

During the ABM, members also voted for the location of the 2021 ESPE Meeting. Many congratulations go to the winning bid from Copenhagen, with Anders Juul as President and Katharina Main as Vice-President. The 2021 meeting will differ from typical ESPE Annual Meetings, with a sharper focus on education and training. We are very much looking forward to it.

To find out more about what your membership can do for you, please watch our [membership video](#) and, of course, keep looking out for news and deadlines in our monthly news alerts and on our website at [www.eurospe.org](http://www.eurospe.org).

**Hannah Bonnell, Joanne Fox-Evans and Tracey-Leigh Meadowcroft, ESPE Team**



**New Council members welcomed at ESPE 2016**

TWO NEW MEMBERS of the ESPE Council began their terms of office at the recent ESPE Meeting in Paris. We welcome:

- **Evangelia Charmandari** (Athens, Greece), Chair of the Clinical Practice Committee, replacing Gary Butler.
- **Rasa Verkauskiene** (Kaunas, Lithuania), Chair of the Education & Training Committee, replacing Jan Lebl.

We wish them well in their new roles and thank the retiring Council members for their enormous contribution to ESPE. We also congratulate Mehul Dattani (London, UK) on his re-election as Chair of the Programme Organising Committee.

**Seminar on rare paediatric endocrine diseases**

**Athens, Greece, 6-8 March 2017**

THIS IPOKRATES SEMINAR will update you on 'Novel diagnostic and treatment options for rare paediatric endocrine diseases'. Find out more about the programme and registration (which is on a first-come, first-served basis) at <http://ipokrates.info/seminars/postgraduates>. Alternatively, contact Wolfgang Högler ([wolfgang.hogler@bch.nhs.uk](mailto:wolfgang.hogler@bch.nhs.uk)).

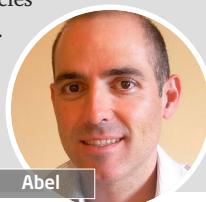
**Welcome to the team!**

WE ARE DELIGHTED TO WELCOME Assimina Galli-Tsinopoulou (Thessaloniki, Greece) and María Salomón Estébanez (Manchester, UK) to join Abel López-Bermejo on the ESPE Newsletter's Editorial Board.

The Editorial Board welcomes ideas and suggestions for articles from all ESPE members. The ESPE Newsletter is always pleased to

include your news and details of any events you are organising.

To get in touch or submit articles please contact the ESPE Team at [espe@eurospe.org](mailto:espe@eurospe.org). The deadline for items for publication in the next issue is 13 January 2017.



Abel



Assimina



María

# Award winners at ESPE 2016



We congratulate the many award winners who received their prizes at ESPE 2016 in Paris in September.



## ESPE Andrea Prader Prize

Wieland Kiess (Leipzig, Germany, on the right) received the ESPE Andrea Prader Prize from Peter Clayton, in recognition of his lifetime achievement in teaching and research, outstanding leadership and overall contribution to the field of paediatric endocrinology.



## ESPE Outstanding Clinician Award

Hilary Hoey (Leixlip, Ireland) was presented with the ESPE Outstanding Clinician Award by Gary Butler, in recognition of her outstanding clinical contribution to the practice of clinical paediatric endocrinology.



## ESPE International Award

George Werther (Victoria, Australia, on the right) received the ESPE International Award from Peter Clayton. This is presented to an outstanding paediatric endocrinologist from a country outside Europe and the Mediterranean basin.



# 2017 ESPE Awards

Remember to make your nominations by **10 December 2016**

For further details see [www.eurospe.org/awards](http://www.eurospe.org/awards)



## ESPE International Outstanding Clinician Award

Marco Rivarola (Buenos Aires, Argentina, on the right) received the ESPE International Outstanding Clinician Award from Jan Lebl, in recognition of his contribution and commitment to clinical paediatric endocrinology in a country outside Europe and the Mediterranean basin.



## ESPE Research Award

Ken Ong (Cambridge, UK) received the ESPE Research Award from Anita Hokken-Koelega, in recognition of research achievements of outstanding quality in basic endocrine science or clinical paediatric endocrinology.



Award winners at ESPE 2016 - *continued*

## ESPE Young Investigator Awards

These awards for young paediatricians, in recognition of their scientific publications, were presented to:

- **Loredana Marcovecchio** (Chieti, Italy), whose award lecture was entitled 'Diabetic nephropathy in young people with type 1 diabetes: early manifestations and risk factors'
- **Tanja Kuirri-Hänninen** (Kuopio, Finland), whose award lecture was entitled 'Mini-puberty'



Loredana



Tanja

## Henning Andersen Prizes

These awards for the most highly rated abstracts submitted to the ESPE Meeting were presented to:

- **Aurore Carré** (Paris, France) for 'Borealin mutations in thyroid dysgenesis reveal a new function of this protein in cell adhesion and migration'
- **Klemens Raile** (Berlin, Germany) for 'KCNQ1 mutations cause both neonatal diabetes and hyperinsulinaemic hypoglycaemia of infancy'



Aurore



Klemens

## ESPE President Poster Awards

This year's prizes for the five best posters at the meeting were awarded to:

- **Marta Díaz** (Barcelona, Spain) for 'Placental and cord blood DNA methylation profiling in small-for-gestational-age newborns from uncomplicated pregnancies: relationship to prenatal growth and postnatal body composition' (P1-442)
- **Shota Fukuhara** (Kyoto, Japan) for 'The collapse of the BDNF/POMC system in the hypothalamus is responsible for the extreme obesity with hyperphagia observed in female heterozygous *MeCP2* null mice' (P1-443)
- **Franziska Käßner** (Leipzig, Germany) for 'The impact of activating *PIK3CA* mutations and *PTEN* haploinsufficiency on human adipocyte phenotype and biology' (P1-445)
- **Johanna Käsäkoski** (Helsinki, Finland) for 'Complete androgen insensitivity syndrome caused by a deep intronic pseudoexon-activating mutation in the androgen receptor gene' (P1-335)
- **Jayna Mistry** (London, UK) for 'The mechanistic role of fibroblast growth factor 21 (FGF21) in growth hormone resistance secondary to chronic childhood conditions' (P1-593)

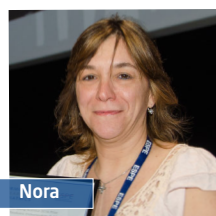
## ESPE Hormone Research in Paediatrics Prizes

These prizes for the best original papers published in *Hormone Research in Paediatrics* were awarded to:

- **Nienke Bakker** (Rotterdam, The Netherlands) for 'Dietary energy intake, body composition and resting energy expenditure in prepubertal children with Prader-Willi syndrome before and during growth hormone treatment: a randomised controlled trial' (Original Paper) (award collected by **Renske Kuppens**, pictured)
- **Nora Saraco** (Buenos Aires, Argentina) for 'An intron 9 *CYP19* gene variant (IVS9+5G>A), present in an aromatase-deficient girl, affects normal splicing and is also present in normal human steroidogenic tissues' (Novel Insights from Clinical Practice)



Renske



Nora

## IFCAH-ESPE Grants

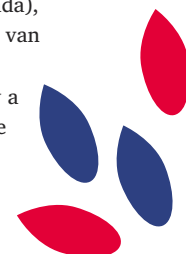
The following awards were made for research into congenital adrenal hyperplasia (CAH):

- **Anne Bachelot** (Paris, France) for 'Prospective study of pregnancy outcomes in women treated early by dexamethasone for CAH' (€50 000)
- **Hedi Claahsen-van der Grinten** (Nijmegen, The Netherlands) for 'The aetiology and characteristics of testicular adrenal rest tumours' (€66 000)
- **Gerard Conway** (London, UK) for 'Optimising fertility outcomes for women with CAH – an assessment of endometrial function and pregnancy complications' (additional €100 000)
- **Leonardo Guasti** (London, UK) for 'Study of CAH adrenocortical cells reprogrammed from urine: a step towards cell therapy' (€100 000)
- **Laetitia Martinerie** (Paris, France) for 'Sodium wasting, water balance and fludrocortisone needs in CAH: the NaCAH Study' (€72 000)
- **Richard Ross** (Sheffield, UK) for 'Adrenal crisis emergency spray: dexamethasone and fludrocortisone via the nasal route [part 2]' (€60 000)

## ESPE Research Unit Grant

Three awards of €30 000 per year for 2 years have been made to the following recipients, to facilitate collaborative research in paediatric endocrinology:

- Laura de Graaff (The Netherlands), Sabine Elisabeth Hannema (The Netherlands), Martine Cools (Belgium), Gary Butler (UK), Jesus Argente (Spain) for 'YESS! Introduction of the Young Endocrine Support System in the transition from paediatric to adult endocrine care'
- Magdalena Stefanija Avbel (Slovenia), Liat de Vries (Israel), Taneli Raivio (Finland) for 'Identification of novel genetic causes of familial central precocious puberty'
- Gabor Szinnai (Switzerland), Johnny Deladoëy (Canada), Michel Polak (France), Heiko Krude (Germany), Paul van Trotsenburg (The Netherlands) for 'Improvement of diagnostic work up for congenital hypothyroidism by a multigene NGS panel: a multicentre study to compare diagnostic accuracy and cost effectiveness'



# ESPE: supporting endocrine science

[www.eurospe.org/science](http://www.eurospe.org/science)

The ESPE Science Committee provides fantastic opportunities for members to strengthen their scientific and research careers in paediatric endocrinology.

## Advanced Seminar in Developmental Endocrinology 2016

Ulm, Germany, 3-4 June 2016

THE 10TH ADVANCED SEMINAR (pictured) discussed 'Developmental biology of gastrointestinal hormones'. The programme attracted 40 participants and speakers from 13 European countries and the USA.

Participants and speakers examined developments in gastrointestinal endocrinology with respect to child health. The wide-ranging programme looked at the role of gastrointestinal hormones in growth, bowel disease, the CNS and bariatric surgery. It featured topics as diverse as the development of sweet taste perception, the impact of gut microbiota on enteroendocrine function, and new pharmacological approaches for the treatment of diabetes and obesity. You can find the full programme at [www.eurospe.org/education/DevEndoSeminar/2016/2016Programme.pdf](http://www.eurospe.org/education/DevEndoSeminar/2016/2016Programme.pdf).

Gastrointestinal endocrinology is a fairly new field of interest for physicians and scientists in paediatric endocrinology. The gut is the largest endocrine organ in the body, since many hormones are produced in gastrointestinal endocrine cells.

The gastrointestinal hormones act via autocrine, paracrine and endocrine pathways, and can regulate digestion, hunger and satiety. They have clinically relevant importance in the regulation of growth, weight and metabolism, as well as mood and behaviour. Knowledge of the developmental biology of gastrointestinal hormones therefore helps



us understand the physiology and pathophysiology of the growing organism in many respects. Recent developments have also led to new diagnostic tools and new pharmacological interventions.

Physicians and scientists in paediatric endocrinology and diabetes will deal intensively with gastrointestinal endocrinology in the future. Consequently, summaries of the lectures from the seminar will be published in the Karger series *Endocrine Development* ([www.karger.com/ende](http://www.karger.com/ende)).

**Martin Wabitsch**, ESPE Science Committee

### Your Science Committee

The Science Committee supports ESPE's educational and grant programmes in science, as well as networks and databases for collaborative projects. It also handles enquiries about scientific matters, and lobbying. Its executive members are:

**Faisal Ahmed** (Chair)

**Martine Cools** (Deputy Chair)

**Nicolas De Roux** (Science Workshop Convenor)

**Martin Wabitsch** (Science Workshop Deputy Convenor)

**Irène Netchine** (Research Unit Convenor)

**Olaf Hiort** (Early Career Scientific Development Award Convenor)

**Outi Mäkitie** (Mid-Career Scientific Development Award Convenor)

**Katharina Main** (Research Fellowship Convenor)

The Committee is also supported by ex-officio members and an expert panel, which reviews applications for grants and activities. To contact members of the Committee, see

[www.eurospe.org/about/committees/committees\\_scientific.html](http://www.eurospe.org/about/committees/committees_scientific.html).

## NEW FOR 2017 ESPE Science Workshop

The popular Advanced Seminars in Developmental Endocrinology are set to merge with the ESPE Science School to form the annual ESPE Science Workshop. You can find out more at [www.eurospe.org/education/education\\_scienceworkshop.html](http://www.eurospe.org/education/education_scienceworkshop.html).

## Funding and grants

ESPE provides a range of grants for research in endocrine science. See [www.eurospe.org/science](http://www.eurospe.org/science) for details of the following awards:

- Early Career Scientific Development Award – next deadline 31 January 2017
- Mid-Career Scientific Development Award – next deadline 4 December 2016
- ESPE Research Unit – next deadline 28 February 2017
- IFCAH-ESPE Grant\*
- Research Fellowship\*

\*Future deadlines to be confirmed

# ESPE Summer School 2016

Chateau de la Tour,  
near Chantilly, France,  
7-9 September 2016



THIS YEAR SAW THE 30TH ESPE Summer School, held in beautiful surroundings north of Paris, just before the ESPE Meeting. An important event in the annual calendar, it brings together paediatric endocrinologists in training and academic clinicians and scientists.

The Steering Committee made use of a combination of state of the art lectures and interactive cases to convey the four themes of the programme:

- Diabetes
- Bone
- Thyroid
- Endocrine problems in adolescence.

Presentation of cases by each student is a central feature of the Summer School. These are initially discussed in small groups

facilitated by a faculty member, before being delivered to the whole group. The extensive range of challenging endocrine cases led to active discussion and interaction between the students and teachers.

A total of 25 delegates represented 15 countries from 3 continents, demonstrating the global influence of ESPE. The faculty comprised Carlo Acerini (Cambridge, UK), Tom Carpenter (New Haven, CT, USA), Heiko Krude (Berlin, Germany), Jan Lebl (Prague, Czech Republic), Julianne Léger (Paris, France), Oliver Semler (Cologne, Germany) and Margaret Zacharin (Melbourne, Australia), in conjunction with the Summer School Steering Committee. We thank them all for their contributions and interactions with the students. We also thank Laetitia

Martinier (Paris, France) and Frédéric Brioude (Paris, France) for their superb organisation of the venue and activities.

The ESPE Summer School has taken place every year since 1987, and since its inception it has been supported by Ferring Pharmaceuticals, which is greatly appreciated.

The Summer School (Global Fellows Programme) for 2017 will take place on 11–13 September just before the 10th International Meeting of Pediatric Endocrinology in Washington, DC, USA. You will find details at [www.eurospe.org/education/education\\_summer.html](http://www.eurospe.org/education/education_summer.html) shortly. The deadline for applications is 1 February 2017.

**Nick Shaw**, *ESPE Summer School Steering Committee Co-ordinator*

## Autophagy: Nobel-winning research with implications for endocrinology

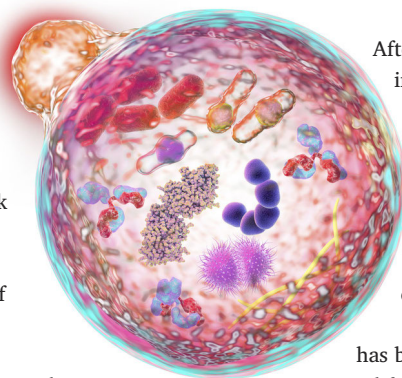
YOU MAY HAVE HEARD IN THE NEWS that the 2016 Nobel Prize in Physiology or Medicine has been awarded to Yoshinori Ohsumi, a Japanese cell biologist at the Tokyo Institute of Technology, for his discoveries of mechanisms of autophagy.

The word ‘autophagy’ originates from two Greek words meaning ‘self-eating’. This concept was recognised in the 1960s, when researchers first observed that cells could digest and recycle parts of their own content, such as proteins and damaged organelles.

The mechanism and physiological relevance of autophagy remained poorly understood for decades until 1993, when Ohsumi published the discovery of as many as 15 genes essential for the activation of autophagy in eukaryotic cells. He also studied the function of the proteins encoded by key autophagy genes, elucidating the process’s complex machinery.

As autophagy is well conserved from yeast to humans, Ohsumi’s discoveries have also provided the necessary tools to enable the appreciation of its important role in diverse physiological and disease processes.

Thanks to Ohsumi’s work, we now know that autophagy participates in the cellular response to starvation and other types of stress. It also contributes to embryogenesis and cell differentiation.



After infection, autophagy can eliminate invading intracellular bacteria and viruses. Autophagy is also thought to be a critical mechanism for counteracting some of the negative consequences of ageing.

Disturbances in the autophagic machinery have been linked to Parkinson’s disease, cancer and type 2 diabetes. Furthermore, single gene disorders in the autophagy pathway are an emerging, novel and diverse group of multisystem diseases in children.

From the perspective of endocrinology, autophagy has been shown to play an important role in regulating the normal function of pancreatic  $\beta$ -cells and insulin-target tissues, such as skeletal muscle, liver, and adipose tissue. Enhanced autophagy acts as a protective mechanism against oxidative stress in these tissues.

Altered autophagic activity has been implicated in the progression of obesity to type 2 diabetes, through impaired  $\beta$ -cell function and development of insulin resistance. Autophagy could therefore represent an attractive target for therapeutic interventions against obesity and diabetes.

### María Salomón Estébanez

#### Further reading

- Takeshige *et al.* 1992 *Journal of Cell Biology* **119** 301–311.  
Tsukada & Ohsumi 1993 *FEBS Letters* **333** 169–174.  
Mizushima *et al.* 1998 *Nature* **395** 395–398.  
Ichimura *et al.* 2000 *Nature* **408** 488–492.

# Achieving more together

## ESPE Clinical Practice Committee 2010-2016

As Gary Butler stands down after 6 years as Chair of ESPE's Clinical Practice Committee, he reflects on the satisfaction of working with others to improve clinical care.



I WAS ATTRACTED TO ESPE's Clinical Practice Committee (CPC) because I like being able to move clinical care forwards. Sometimes that means working with others to share understanding and create guidelines. I had some experience of doing this locally, then through the British Society for Paediatric Endocrinology and Diabetes (BSPED).

*'Sitting round a table together with colleagues from all parts of the world is truly awesome, but so friendly!'*

I was appointed as an ordinary CPC member initially, but I felt I had 'unfinished business', so when the vacancy for Chair arose, I decided to apply.

The CPC is important because it is responsible for one of ESPE's main objectives:

improving standards of clinical care and practice. It achieves this through guideline development, providing good information and specific clinical training.

The Committee comprises an elected Chair (who also sits on the ESPE Council), along with five other members, who are clinical paediatric endocrinologists representing a wide area of practice and expertise, including diabetes. Everyone has a portfolio and series of tasks, allocated by self-suggestion or committee discussion. We meet face to face annually at the ESPE Meeting, and occasionally in between. We also have teleconferences every 3 months and communicate by email at other times – especially when issues or urgent problems crop up.

As CPC Chair, I really enjoyed making new contacts across all the paediatric endocrine societies worldwide, as we worked together on common ventures such as

consensus meetings and guidelines. It made me realise that we all have common ideals and that we can achieve so much more by working together.

Establishing the Intersociety Clinical Guidelines Committee, now part of the International Consortium of Pediatric Endocrinology, and sitting round a table together with colleagues from all parts of the world is truly awesome, but so friendly!

In future, I hope that the CPC will continue to involve ESPE members and others in the ongoing improvement of clinical practice, and that more people become involved.

If you have a passion to develop or improve an area of care then please get in touch. The new team under Evangelia Charmandari will appreciate your ideas. Don't be shy to come forward.

**Gary Butler**  
Former Chair, Clinical Practice Committee

## Symposium in memory of Primus-Eugen Mullis

Bern, Switzerland, 27 January 2017

Primus Mullis was a dedicated paediatric endocrinologist and diabetologist. In his memory, colleagues, friends and family members are invited to share a day discussing the topics he loved so much.

### PROGRAMME

#### Symposium 1

Congenital hypopituitarism: genotype-phenotype correlations  
*Mehul Dattani*

IGF2 regulation – implications for fetal and postnatal growth  
*Irène Netchine*

Optimising GH treatment  
*Michael Ranke*

#### Invited free communications

Somapacitan possesses a once-weekly treatment profile in children with GH deficiency  
*Michael Højby Rasmussen* – SPONSORED BY NOVO NORDISK

Adherence in paediatric GH treatment  
*Udo Meinhardt* – SPONSORED BY MERCK

From diagnosis to treatment – SHOX deficiency and other forms of short stature  
*Klaus Mohnike* – SPONSORED BY ELI LILLY

PATRO children, a multi-centre, non-interventional study of the long term safety and efficacy of Omnitrope®  
*Roland Pfäffle* – SPONSORED BY SANDOZ/NOVARTIS

Pfizer's commitment to research and medical education  
*Roy Gomez* – SPONSORED BY PFIZER

#### Symposium 2

Bizarre cases of GH deficiency  
*Gerald Theintz*

The Swiss GH registry  
*Grit Sommer*

Autosomal dominant GHDII – benchside studies  
*Maria Mileta*

Growth and steroid disorders  
*Christa E Flück*

#### PRICES

Dinner (26 January) CHF 110  
Symposium (27 January) CHF 50

#### HOW TO REGISTER

Please email [sandra.schlatter@insel.ch](mailto:sandra.schlatter@insel.ch) before 30 November 2016

# Future meetings

See [www.eurospe.org/meetings](http://www.eurospe.org/meetings) for details of all future meetings



**10th International Meeting of Pediatric Endocrinology**  
14-17 September 2017  
WASHINGTON, DC, USA



**57th Annual ESPE Meeting**  
27-29 September 2018  
ATHENS, GREECE



**58th Annual ESPE Meeting**  
19-21 September 2019  
VIENNA, AUSTRIA

## Other events

- |  |  |   |
|--|--|---|
| <b>6th ESPE Maghreb School</b><br>22-27 November 2016<br>Tunisia | <b>3rd ASPED-ESPE School</b><br>7-11 December 2016<br>Jeddah, Saudi Arabia | <b>ESPE Winter School</b><br>10-16 February 2017<br>Belchin, Bulgaria |
|--|--|---|

## Deadlines

Please note these fast-approaching deadline dates and submit your applications as soon as possible.

**Help run your Society:** There are also several imminent deadlines for vacancies on ESPE Committees. Find out more at [www.eurospe.org/about/vacancies](http://www.eurospe.org/about/vacancies).

|   |                    |
|---|--------------------|
| ESPE Mid-Career Scientific Development Award applications   | <b>4 Dec 2016</b>  |
| ESPE Andrea Prader Award nominations                        | <b>10 Dec 2016</b> |
| ESPE Research Award nominations                             | <b>10 Dec 2016</b> |
| ESPE Young Investigator Award nominations                   | <b>10 Dec 2016</b> |
| ESPE Outstanding Clinician Award nominations                | <b>10 Dec 2016</b> |
| ESPE International Outstanding Clinician Award nominations  | <b>10 Dec 2016</b> |
| ESPE International Award nominations                        | <b>10 Dec 2016</b> |
| IFCAH-ESPE Letters of Intent submission                     | <b>16 Jan 2017</b> |
| ESPE Early Career Scientific Development Award applications | <b>31 Jan 2017</b> |
| ESPE Summer School applications                             | <b>1 Feb 2017</b>  |
| ESPE Research Unit Grant preliminary applications           | <b>27 Feb 2017</b> |
| ESPE Research Unit Grant final applications                 | <b>17 Apr 2017</b> |
| ESPE Early Career Scientific Development Award applications | <b>30 Apr 2017</b> |
| ESPE Research Fellowship applications                       | <b>1 May 2017</b>  |
| ESPE Clinical Fellowship applications                       | <b>31 May 2017</b> |

See the ESPE website at [www.eurospe.org](http://www.eurospe.org) for further details and the application or nomination process



European Society for Paediatric Endocrinology

Improving care of children with endocrine diseases by promoting knowledge and research

**Secretary General:**

Professor Peter Clayton  
BSc MD(Manchester) MRCP FRCPCH,  
Paediatric Endocrinology Department  
Royal Manchester Children's Hospital  
Oxford Road, Manchester M13 9WL, UK  
Tel: + 44 (0)161 7016949  
Email: [peter.clayton@manchester.ac.uk](mailto:peter.clayton@manchester.ac.uk)

ESPE website: [www.eurospe.org](http://www.eurospe.org)

### ESPE Newsletter

© 2016 The European Society for Paediatric Endocrinology  
*The views expressed by the contributors are not necessarily those of ESPE*

**Editorial Board:** Dr Assimina Galli-Tsinopoulou (Thessaloniki, Greece), Dr Abel López-Bermejo (Girona, Spain) and Dr María Salomón Estébanez (Manchester, UK)  
Email: [espe@eurospe.org](mailto:espe@eurospe.org)

**Sub-Editor:** Caroline Brewser

**Designed by:** Sublime Creative

**Published by:** Bioscientifica Ltd  
Euro House, 22 Apex Court, Woodlands  
Bradley Stoke, Bristol BS32 4JT, UK  
[www.bioscientifica.com](http://www.bioscientifica.com)

*Bioscientifica is a subsidiary of the Society for Endocrinology*

### ESPE Office

The ESPE Office is managed by Bioscientifica Ltd. The role of ESPE's Senior Operating Officer is undertaken by Joanne Fox-Evans and Hannah Bonnell, providing support to ESPE Council and committees and, in particular, to the Secretary General. Tracey-Leigh Meadowcroft is the main point of contact for ESPE enquiries and manages all matters related to ESPE membership. The ESPE Office at Bioscientifica is also responsible for publication of the ESPE Newsletter and monthly news alerts.

Bioscientifica is the Professional Congress Organiser (PCO) for ESPE's Annual Meetings and manages the Corporate Liaison Board, which deals with industry sponsors.

ESPE, Bioscientifica Ltd, Euro House, 22 Apex Court, Woodlands, Bradley Stoke, Bristol BS32 4JT, UK  
Tel: + 44 (0)1454 642246 Fax: + 44 (0)1454 642222  
Email: [espe@eurospe.org](mailto:espe@eurospe.org)